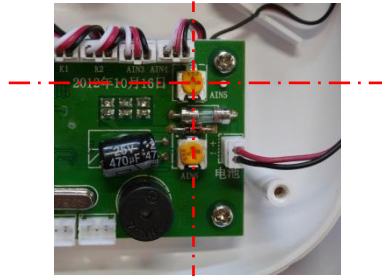


1



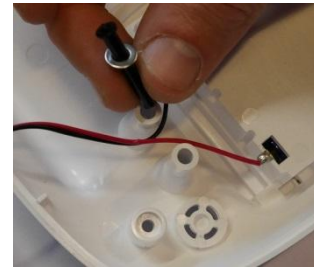
Open the back side of the transmitter

2



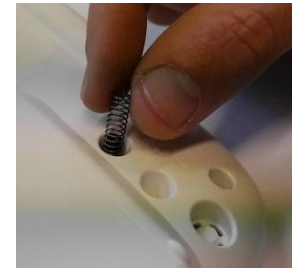
Be sure the upper potentiometer is set exactly in the middle

3



Place the pin (with plate) in the upper hole

4



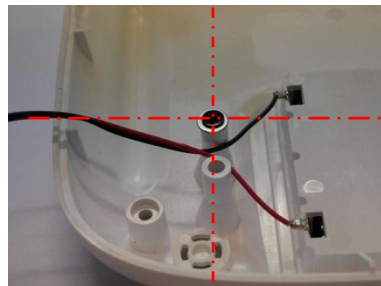
The place the spring on the pin, on the back side of the transmitter

5



Screw the lever on the pin

6



Be sure the cross is exact aligned, on the potentiometer position.

7



Close the transmitter housing.